



# MASTER LEDtube EM/ Mains T8

## MASTER LEDtube STD 1200mm 10.5W840 T8 I

The Philips MASTER LEDtube integrates a LED light source into a traditional fluorescent form factor. Its unique design creates a perfectly uniform visual appearance which cannot be distinguished from traditional fluorescent. For those that are looking for value for money within limited budget and re-lamping efforts for better light effect and lifetime.

### Product data

General Information	
Cap-Base	G13 [ Medium Bi-Pin Fluorescent]
RoHS mark	RoHS mark
Nominal Lifetime (Nom)	50000 h
Switching Cycle	200000X
B50L70	50000 h
Light Technical	
Color Code	840 [ CCT of 4000K]
Luminous Flux (Nom)	1600 lm
Luminous Flux (Rated) (Nom)	1600 lm
Correlated Color Temperature (Nom)	4000 K
Color Consistency	<6
Color Rendering Index (Nom)	83
LLMF At End Of Nominal Lifetime (Nom)	70 %
Operating and Electrical	
Input Frequency	50 to 60 Hz
Power (Nom)	10.5 W
Lamp Current (Max)	50 mA

Lamp Current (Min)	45 mA
Starting Time (Nom)	0.5 s
Warm Up Time to 60% Light (Nom)	0.5 s
Power Factor (Nom)	0.9
Voltage (Nom)	220-240 V
Temperature	
T-Ambient (Max)	45 °C
T-Ambient (Min)	-20 °C
T-Storage (Max)	65 °C
T-Storage (Min)	-40 °C
T-Case Maximum (Nom)	50 °C
Controls and Dimming	
Dimmable	No
Mechanical and Housing	
Product Length	1200 mm

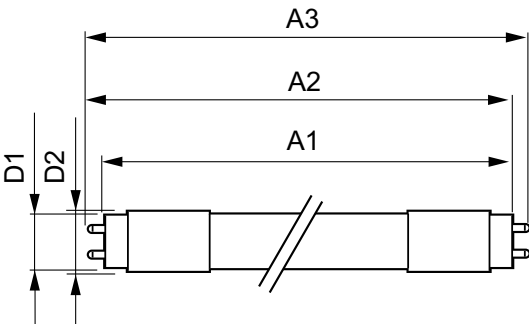
# MASTER LEDtube EM/Mains T8

Approval and Application	
Energy Efficiency Label (EEL)	A++
Energy Saving Product	Yes
Approval Marks	CE marking RoHS compliance KEMA Keur certificate
Energy Consumption kWh/1000 h	11 kWh
Product Data	
Full product code	871869668768000

Order product name	MASTER LEDtube STD 1200mm 10.5W840 T8 I
EAN/UPC - Product	8718696687680
Order code	929001297608
Numerator - Quantity Per Pack	1
Numerator - Packs per outer box	10
Material Nr. (12NC)	929001297608
Net Weight (Piece)	0.251 kg

## Warnings and Safety

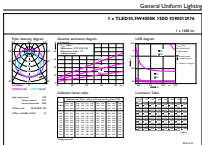
## Dimensional drawing



Product	D1	D2	A1	A2	A3
MASTER LEDtube STD 1200mm 10.5W840 T8 I	25.8 mm	28 mm	1198.2 mm	1205.3 mm	1212.4 mm

TLED 220-240V 10.5W-36W 4000K G13 ND

## Photometric data



General Information 14 Photometric Data 15 Page 19

LEDtube MAS STD 10.5W GU13 840 ND

## MASTER LEDtube EM/Mains T8

